

PART OF THE N. 1/2 OF SECTION 32, T.7N., R.1W., S.L.B. & M.  
& PART OF LOT 40, PLAT "B" NORTH OGDEN SURVEY  
NORTH OGDEN RANCHETTES - UNIT 2

TAXING UNIT: 10

IN NORTH OGDEN CITY  
SCALE 1" = 100'

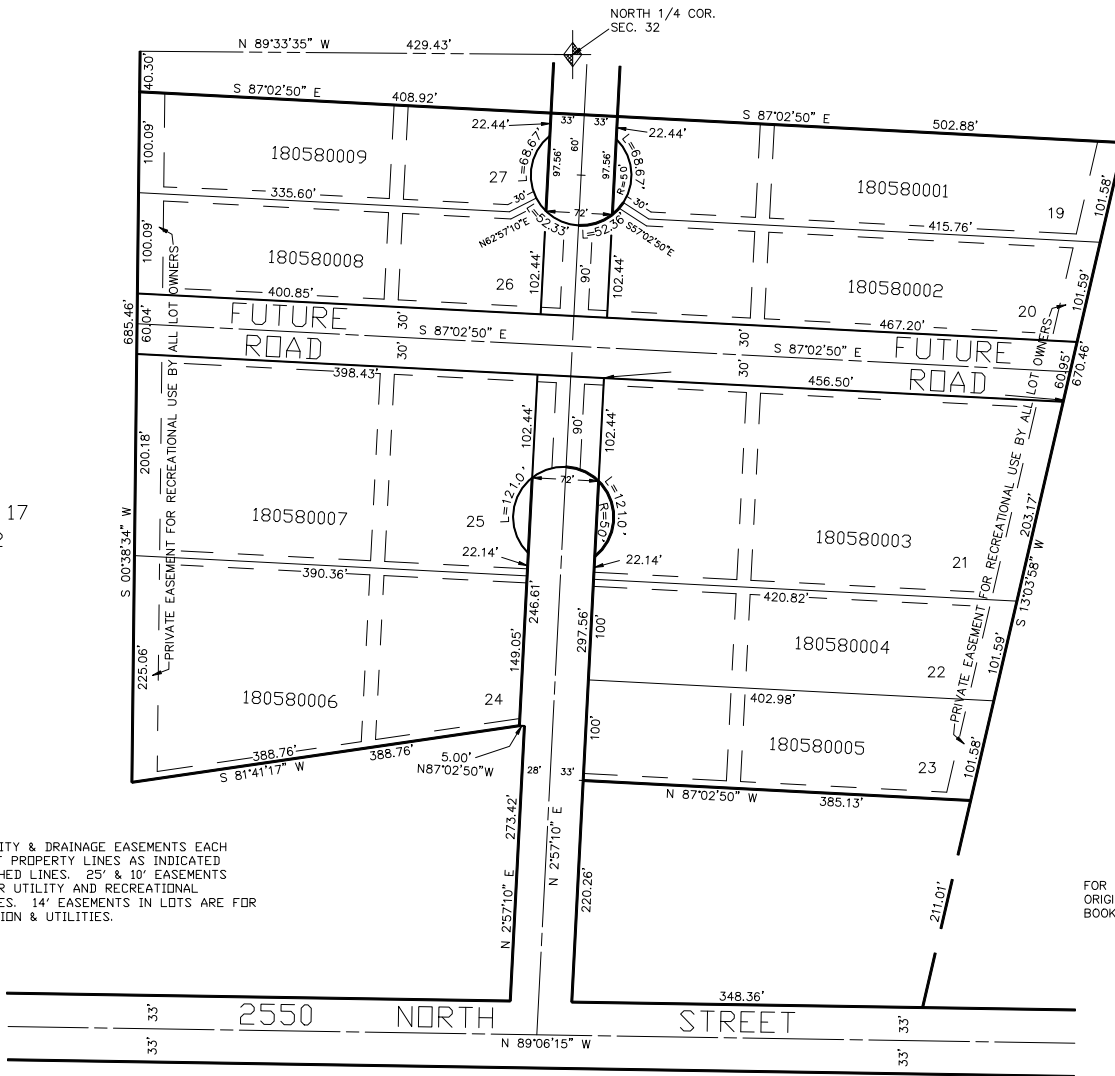
SEE PAGE 57

SEE BOOK 17  
PAGE 72

SEE PAGE 48

7' UTILITY & DRAINAGE EASEMENTS EACH  
SIDE OF PROPERTY LINES AS INDICATED  
BY DASHED LINES. 25' & 10' EASEMENTS  
ARE FOR UTILITY AND RECREATIONAL  
PURPOSES. 14' EASEMENTS IN LOTS ARE FOR  
IRRIGATION & UTILITIES.

FOR COMPLETE ENG DATA SEE  
ORIGINAL DEDICATION PLAT IN  
BOOK 17, PAGE 61 OF RECORDS.



SEE PAGE 56